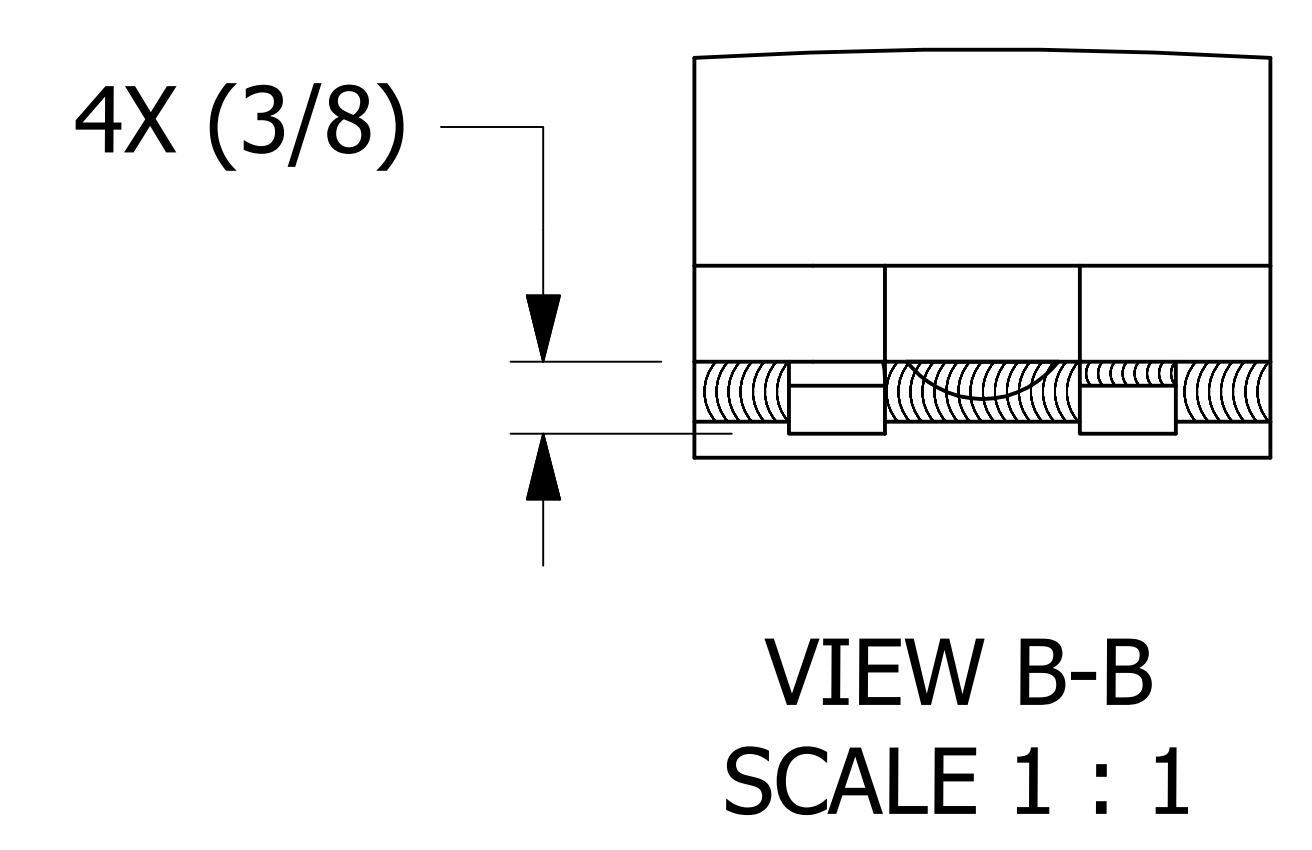
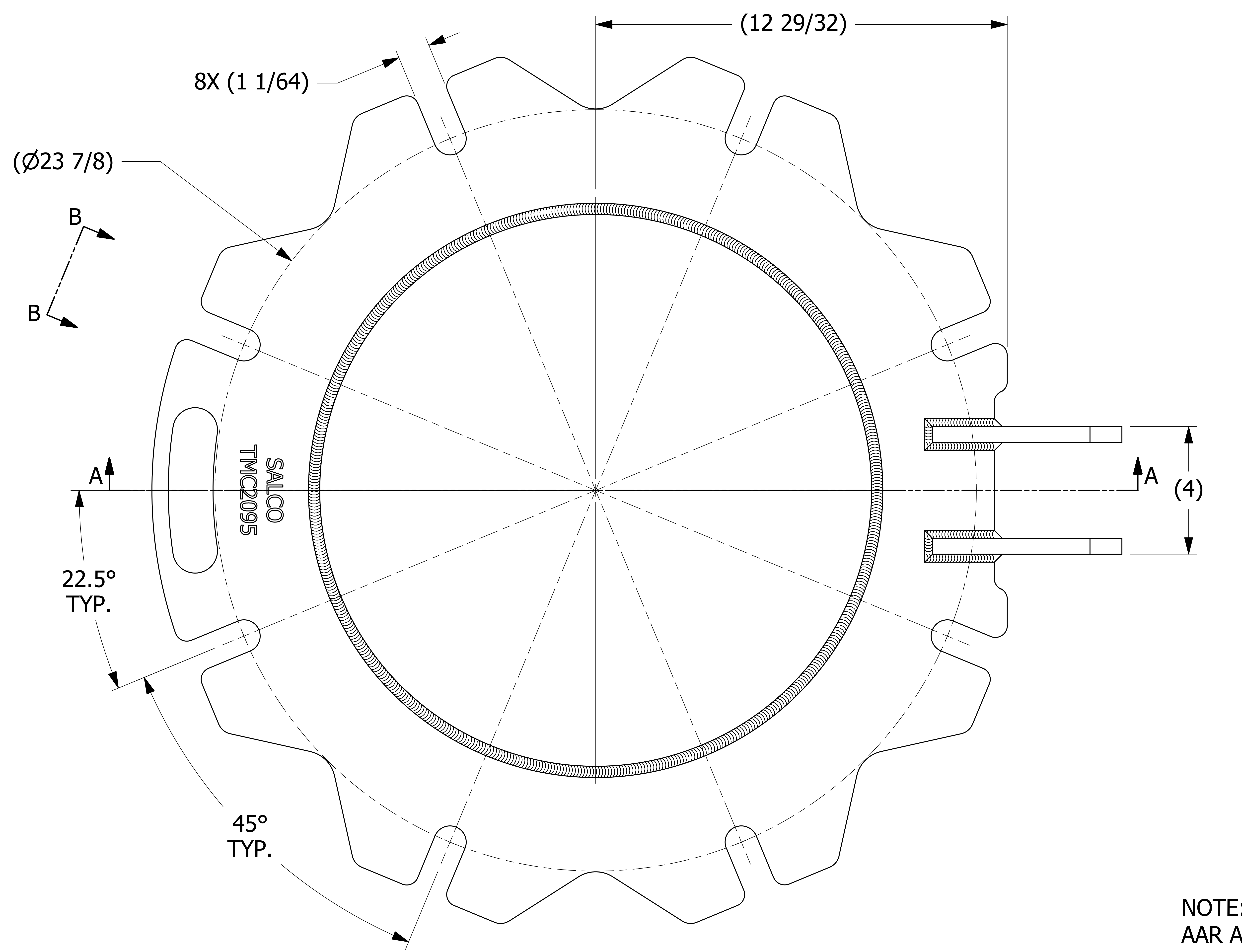
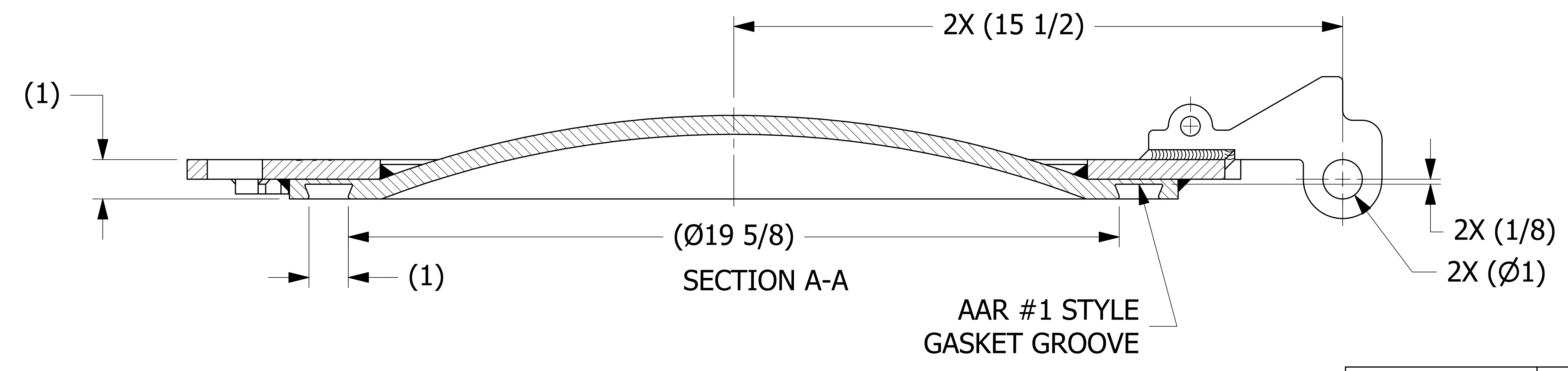


SALES DRAWING SALES DRAWING SALES DRAWING SALES DRAWING SALES DRAWING

SALES DRAWING SALES DRAWING SALES DRAWING SALES DRAWING SALES DRAWING



NOTE:
AAR APPROVAL # E-182113.



I	WEB	5-16-19	REMOVED QAP4A-1 NOTE; Q-2.15.7 WAS QAP4C-1; D-008 WAS DSS 12; ADDED D-005 NOTE; AAR # WAS E-089005
H	RJP	11-17-17	HINGE WELD WAS $\frac{3}{8}$ "; ADDED NOTE 6; ADDED "SALCO" TO ENGRAVING
G	JG	5-9-17	TMCDR2095 WAS TMCR209C1 & TMCDSC1MF; B40713 WAS B41297; A28439 WAS A14392; UPDATED NOTES, VIEWS, DIMS
F	JG	8-11-15	REPLACED TMCHS4TR W/ B41297
E	RJP	7-8-14	ADDED NOTE #5 & HEAT/LOT NOTE, UPDATED TITLE BLOCK
D	GDS	10-24-11	ADDED VIEW D-D
C	CHL	11-1-10	UPDATED NOTES, UPDATED WELD SYMBOL, ADDED PART NUMBER TO RING SURFACE
B	CHL	5-27-08	UPDATED NOTES & ADDED VIEW C
A	CHL	4-10-07	NEW PART ADDED TO SYSTEM
REV	BY	DATE	DESCRIPTION

UNLESS OTHERWISE SPECIFIED DIMENSIONAL TOLERANCES	
FRACTIONAL:	$\pm 1/16$
X.XX:	$\pm .03$
X.XXX:	$\pm .015$
ANGULAR:	$\pm 1^\circ$
DEBurr ALL SHARP EDGES. ALL MACHINED SURFACES TO HAVE A 125 RMS FINISH UNLESS NOTED OTHERWISE.	
THIRD ANGLE PROJECTION	
DRAWN BY:	CHL
CHECKED BY:	ACC
PROTOTYPE BY:	CHL
PROTOTYPE DATE:	5/31/2006
APPROVED FOR PRODUCTION BY:	ACC
PRODUCTION DATE:	4/10/2007

SALCO PRODUCTS, INC.			
PART NAME: MANWAY COVER 20" 8-BOLT			
MATERIAL: CARBON STEEL			
PROJECT #:	WAG0326	SHEET #:	1 OF 1
DRAWING #:	E22025	PART #:	TMC2095
SCALE:		2:3	